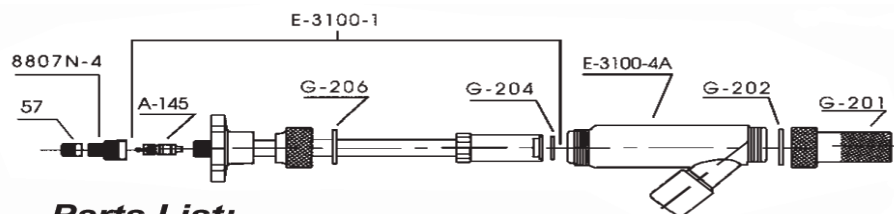




## Haltec Model IN-80A Inflator Adaptor for Air or Liquid Filling of Large Earthmover Tires, Loader or Farm Tires when Equipped with Super Large Bore Valves



The IN-80A will insert or extract a CH-8 or a CH-9 core housing and positively hold it up in the adapter body out of the air or liquid flow when filling or evacuating a tire. The inflator adapter can be attached to any liquid filling tire pump since it has a 1/2" pipe thread. With the adapter attached to the valve the pressure in the tire can be checked without disconnecting it from the valve, with either a large or a standard bore gauge, through the end of the adapter stem. All IN-80A parts are solid brass except the collet, which is stainless steel, and the hand knob which is aluminum.



### **Parts List:**

- G-201 Ejector Union
- E-3100-4A Adapter Body
- G-206 Gasket for E-3100-1
- 8807N-4 Cap Adapter
- E-3100 Complete Stem and Collet
- G-202 Gasket for G-201
- G-204 Snap Ring for Collet
- A-145 Large Bore Valve Core
- 57 Standard Bore Cap

Mailing Address:  
PO Box 1180  
Salem OH 44460-8180

Phone: 330-222-1501, 800-321-6471  
Fax : 330-222-2302

Shipping Address:  
2556 State Route 9  
Salem OH 44460